



COATING

EDOLAN[®] C-RANGE

Less to use, more to gain

WWW.TANATEXCHEMICALS.COM

TANATEX[®]
CHEMICALS 

EDOLAN® C-RANGE is the TANATEX product portfolio of high concentrated polyurethane dispersions for use in textile coating.

EDOLAN® C-RANGE is especially designed for the production of high-performance coated textiles. All the products are aliphatic, contain \pm 60% solids and are free of organic co-solvents, thickeners and external emulsifiers.

EDOLAN® CM is a multi-purpose polyester-polycarbonate based polyurethane with high-performance properties.

- * Medium to high flexibility with very good mechanical abrasion resistance and excellent hydrolysis resistance.
- * Easily mechanically foamable, resulting in a regular foam structure with good abrasion resistance and re-generation values.

EDOLAN® CA is a very soft polyester based polyurethane dispersion. The general properties correspond to those of EDOLAN® GS. The product was primarily developed for the production of high-demanding technical products.

- * Outstandingly suitable for use as an anchor coat due to its softness and flexibility in combination with its good adhesion properties.
- * EDOLAN® CA has a high affinity towards synthetic fibers, especially polyamide, and thus excellent applicable for creating high-performance articles with elevated requirements regarding adhesion in combination with (cold)flex and abrasion.

The new high-solids dispersions offer a number of advantages over the traditional polyurethane dispersions with average 40% solids contents:

- * A higher add-on in one pass;
- * Lower energy consumption;
- * Significant cost savings through higher machine utilization and more efficient use of transportation and stock facilities;
- * Emission free, environmental friendly.

EDOLAN® CT is a soft to medium hard polyester based polyurethane particularly to be applied as a compact topcoat for coating of (technical) textile fabrics.

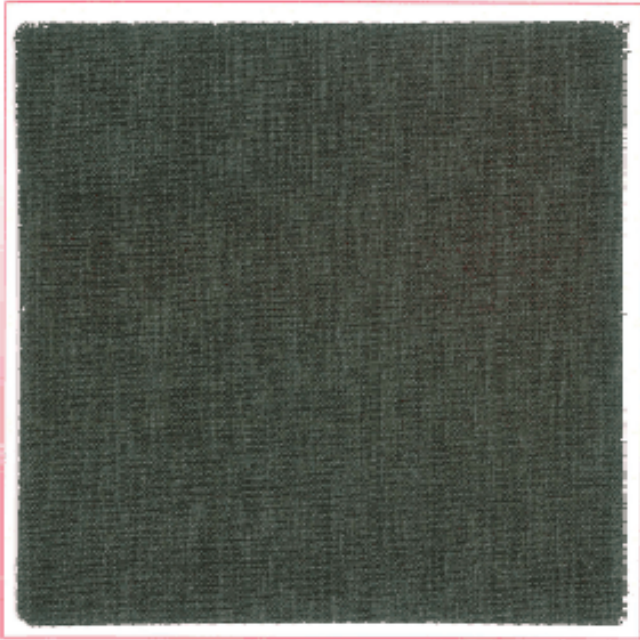
- * Resulting coating has high scratch and abrasion resistance.
- * Can also be applied as basecoat when a stiffer handle is required.
- * Suitable for mechanical foam coatings.

EDOLAN® CU is a soft to medium soft polyurethane dispersion which can be used for the production of fashionable coatings and for the finishing of nonwovens.

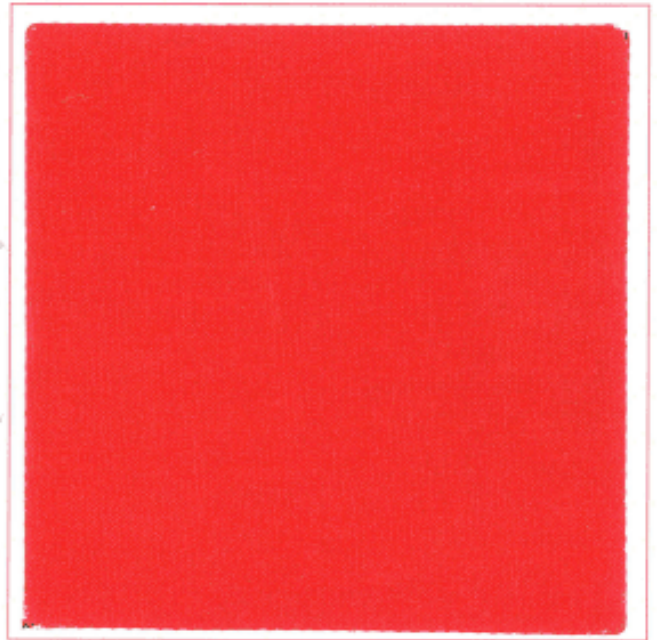
- * High elasticity resulting in soft coatings with slightly rubbery handle.
- * Very suitable to be used as a main building block for different formulations for all types of applications.

The EDOLAN® C-RANGE polyurethane dispersions are non-reactive, but can be crosslinked to improve or upgrade their final properties.

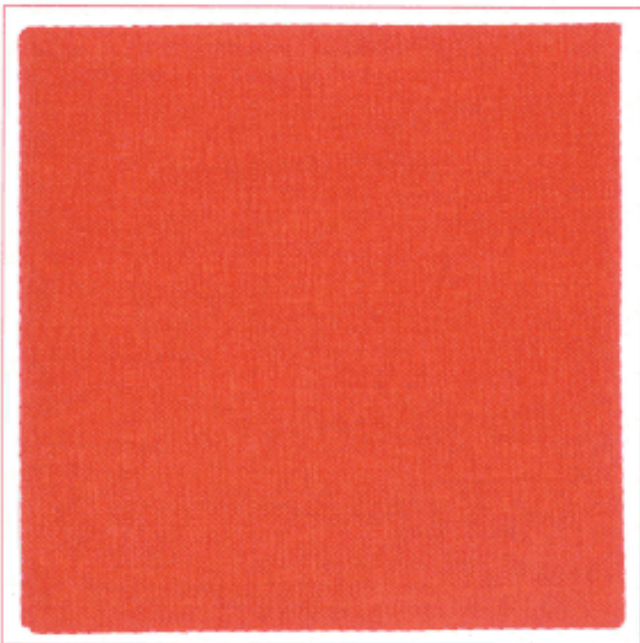
EDOLAN® CM



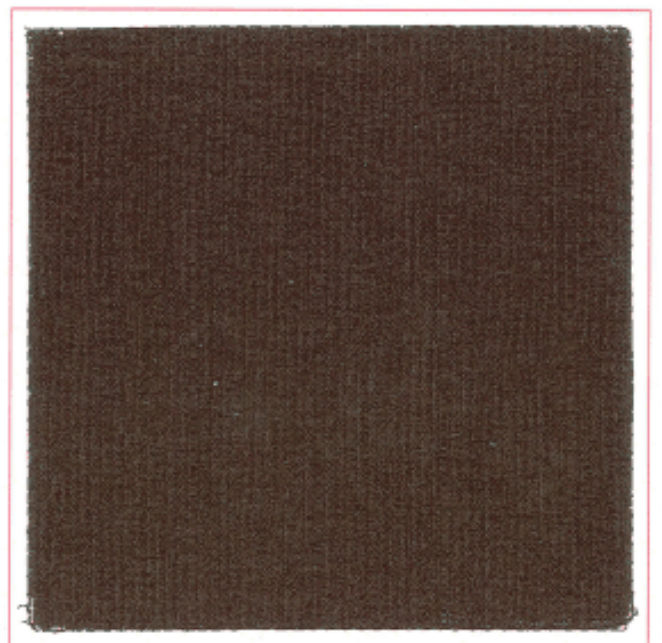
EDOLAN® CT



EDOLAN® CA



EDOLAN® CU





TANATEX Chemicals B.V.

Einsteinstraat 11
P.O. Box 46
6710 BA Ede
Netherlands

Telephone: +31 318 67 90 11

Fax: +31 318 63 02 36

E-mail: coating@tanatexchemicals.com

Internet: www.tanatexchemicals.com