



**CARPET PROCESSING**

# **TANAPRINT<sup>®</sup> DCS**

Thickener for deeper shades,  
sharper contours & faster swelling

[WWW.TANATEXCHEMICALS.COM](http://WWW.TANATEXCHEMICALS.COM)

**TANATEX<sup>®</sup>**  
CHEMICALS 

# TANAPRINT® DCS

**TANAPRINT® DCS is a highly concentrated polyacrylate thickener for Chromojet printing on carpets. It offers: visibly Deeper shades, sharper Contours on all kinds of substrates and quicker Swelling.**

- \* Minimum thickener consumption makes it suitable for producing electrolyte rich and low pH (4.5–5) and high pH (12) printing pastes for spray printing.
- \* Good recycling properties, improved biodegradability, biological degradation, solvent content, readily biodegradable OECD 301B (28d) 84%.
- \* No mineral oils and high flashpoint > 100°C.
- \* Good swelling is achieved and shorter swelling time offers better handling of printing pastes.
- \* Easy control uptake of printing paste and better handling of the Chromojet process parameters.
- \* Achieves homogeneous pastes with an excellent character and spraying properties preventing filter blocking.
- \* Meets the highest requirements concerning viscosity and flow properties which allows a higher productivity.
- \* Formulation allows the use of HSV 200/400 (25dpi) filter system and minimizes blocking of nozzles, resulting in longer runs without color changes from beginning to end.
- \* Frost free printing results which saves dyestuff and results in lower printing costs and higher levelness over the whole carpet.
- \* Because of excellent shear thinning very sharp contours and excellent definition is achievable.
- \* The micro foam in the steamer obtains deeper, more brilliant shades but also good penetration into the pile of the carpet. Cheaper qualities look more expensive.
- \* Good washing-out properties on substrate and for cleaning Chromojet machine.

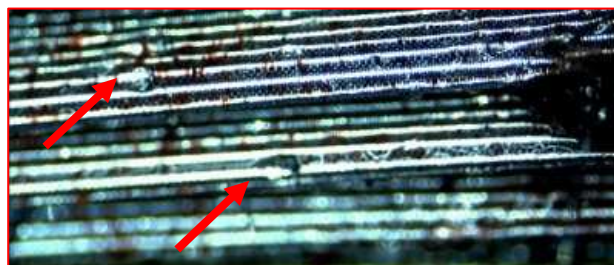


*Left picture: Brilliant shades & good penetration with TANAPRINT® DCS. Right: competitive product.*

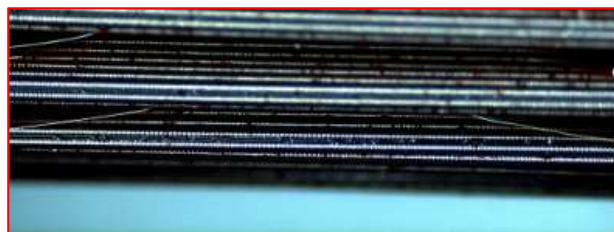


*Thickener with non-swollen particles*

*Perfectly swollen TANAPRINT® DCS*



*Blocked filter in HSV 400 (25dpi)*



*Clean filter after using TANAPRINT® DCS*